

1 INSTALL THE MOUNTING BRACKETS

Securely affix the mounting brackets on the ceiling or wall where you are installing the shade. Ensure that two brackets are positioned at least two inches from the ends of the shade, if required additional brackets can be installed evenly spaced across the width of the shade.



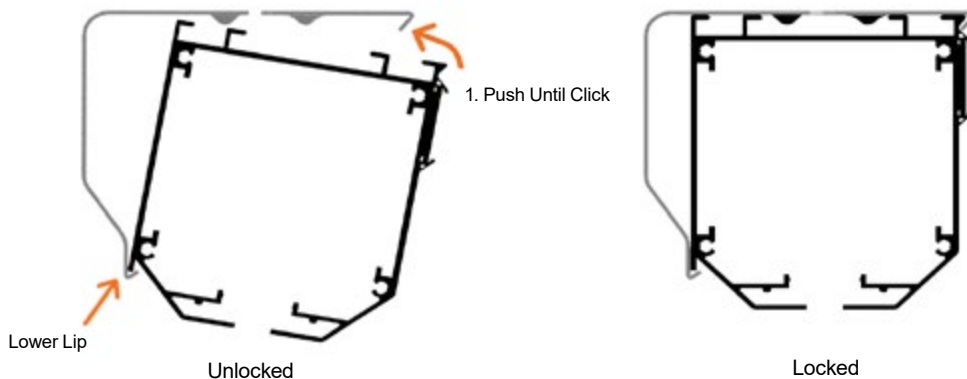
Ceiling / Inside Mount



Wall / Outside Mount

2 INSTALL THE SHADE

Insert the bottom edge of the headrail onto the lower lip of each mounting bracket as shown below. Starting from the center, push back and upward until the top edge of the headrail snaps into the mounting bracket. Repeat this process for each bracket and make sure that the headrail firmly clicks into each mounting bracket.



3 ACCESSING THE MOTOR HEAD BUTTON

Peel the fabric back from the velcro top to expose the 1/4" hole and motor head buttons. Ensure the fabric is parallel to the cassette top when re-attaching. Follow the motor instructions provided.

2. Push Until Click

